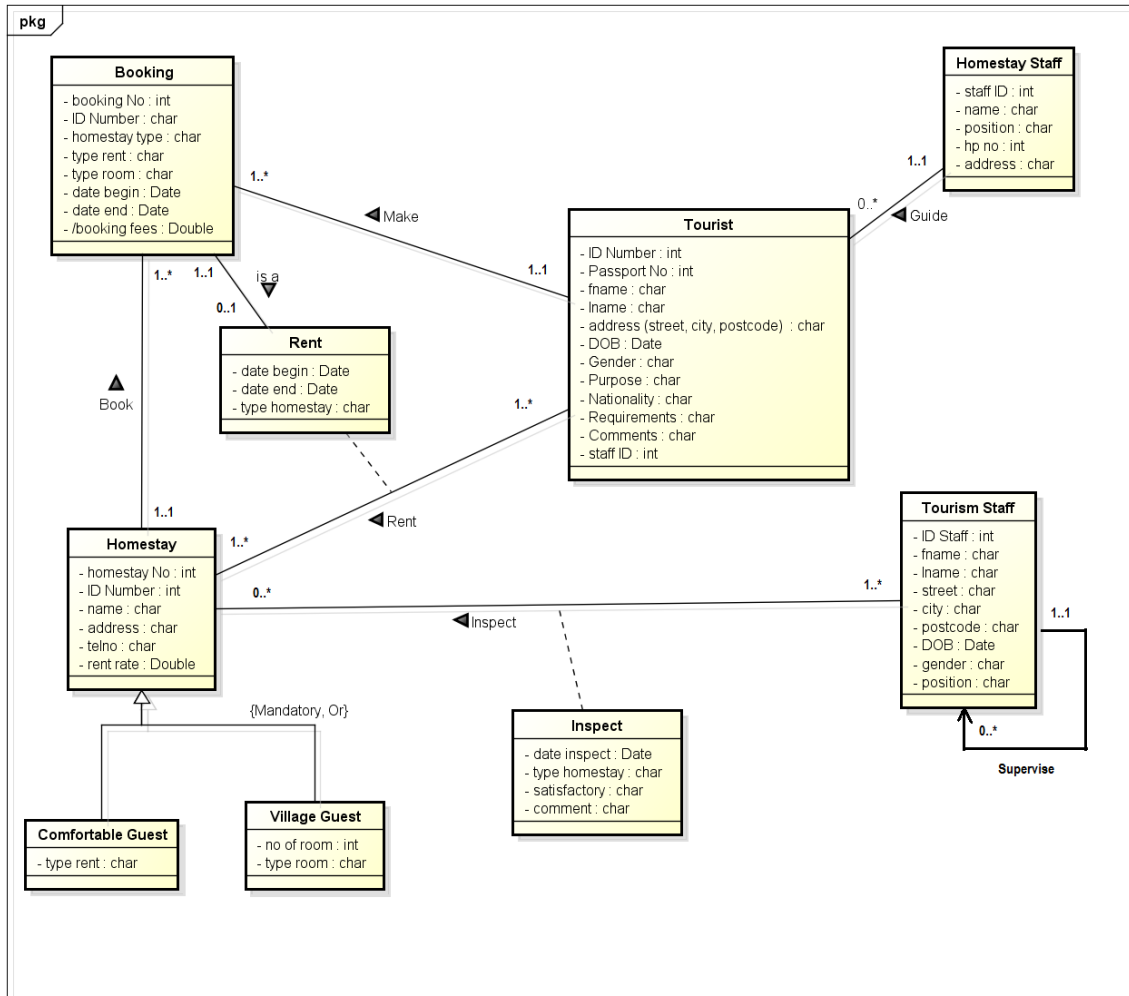


# Solution for Assignment 1 (Group)

## Solution 1 – Conceptual Design

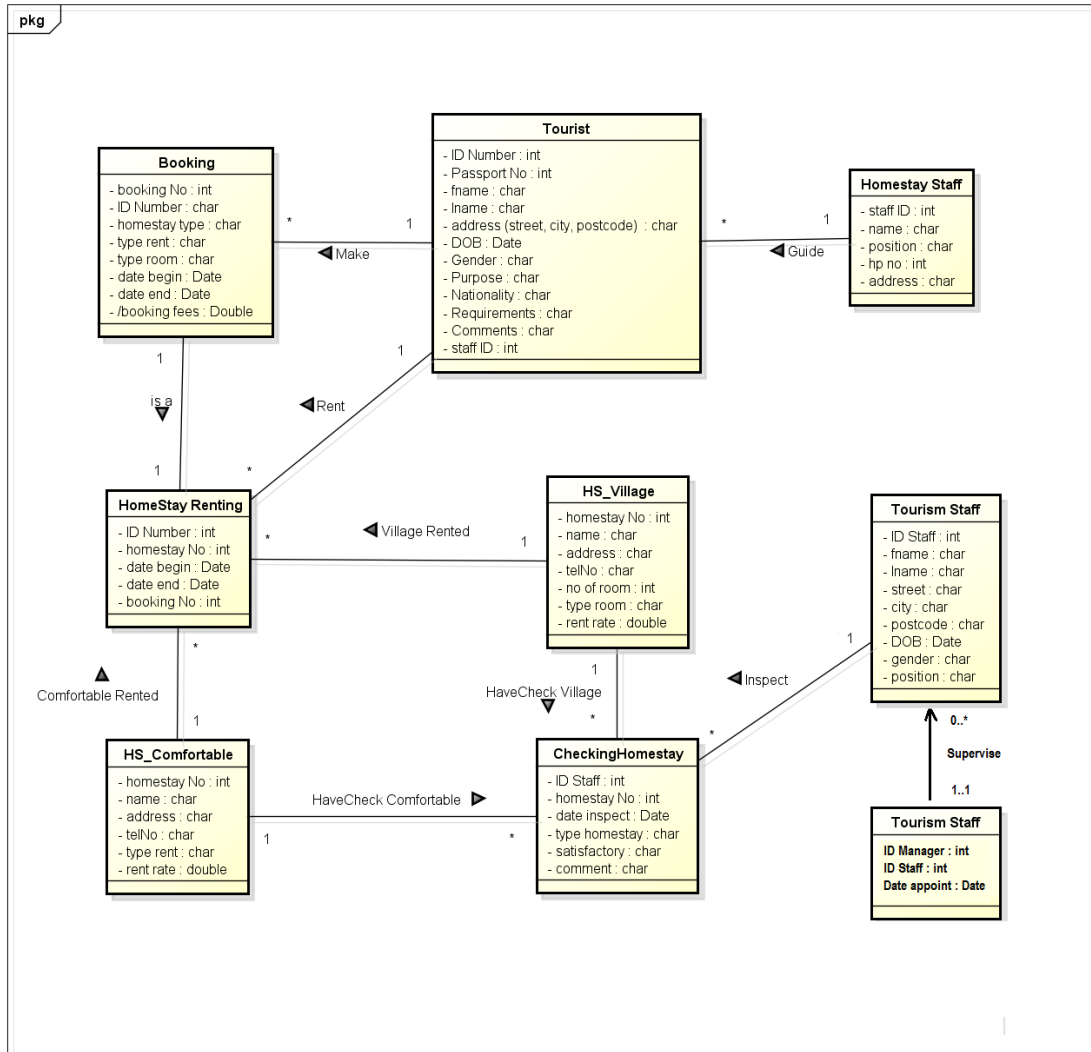


powered by astah

## Conceptual Design for Homestay Information System (HIS)

# Solution for Assignment 1 (Group)

## Solution 2 – Logical Design



powered by astah

## Logical Design for Homestay Information System (HIS)

# Solution for Assignment 1 (Group)

---

## Solution 3 – Relational Model / Schema

Relation / Table
1. <b>Tourist</b> (ID Number, Passport No, fName, lName, .... Staff ID) Primary Key ID Number Alternate Key Passport No Foreign Key staff ID
2. <b>Booking</b> (Booking No, ID Number, homestay type, type rent, ... booking fees) Primary Key Booking No Foreign Key ID Number
3. <b>Homestay Staff</b> (Staff ID, name, position, hp no, address) Primary Key staff ID
4. <b>HomeStay Renting</b> (ID Number, homestay No, date begin, date end, booking No.) Primary Key ID Number + homestay No Foreign Key homestay No references HS_Comfortable (homestay No) Foreign Key homestay No references HS_Village (homestay No) Foreign Key booking No references Booking (booking No)
5. <b>HS_Comfortable</b> (Homestay No, name, address, telNo, type rent, rent rate) Primary Key homestay No
6. <b>HS_Village</b> (Homestay No, name, address, telNo, no of room, type room, rent rate) Primary Key homestay No
7. <b>CheckingHomestay</b> (ID Staff, homestay No, date inspect, type homestay, satisfactory, comment) Primary Key ID Staff+homestay No
8. <b>Tourism Staff</b> (ID Staff, fName, lName, street, city, postcode, DOB, gender, position) Primary Key ID Staff

END OF SOLUTION